



**Australian Hammer Supplies Hire**  
Unit 3/32 Williamson Road  
Ingleburn  
NSW 2565

## Major Service

**RP049987**

Customer AUSTRALIAN HAMMER SUPPLIES HIRE Resource Collin Graham  
Contact

Address Australian Hammer Supplies Hire Pty Ltd  
32 Williamson Road  
Ingleburn  
NSW 2565

Job Type Major Service  
Reference  
Date 2025-06-18 09:12 - 09:19  
Job duration 8:10:00  
Driving duration 00:00:00  
Distance travelled 0 km

Notes AHS156 - 4000HR MAJOR SERVICE - Booked in with customer for service on 13/6/25 - Please call Craig 1hr before you will arrive  
391 Jenolan Caves Road Hartley  
Craig 0405 123 700

Customer/Technician

Resource notes

## Major Service

**Answer**

**Notes**

Additional notes	na
Change engine oil (litres used)	18
Change fuel filter	yes
Change gear oil (litres used)	28
Change hydraulic oil (litres used)	240
Change hydraulic pilot filter	yes
Change hydraulic return filter	yes
Change hydraulic suction filter	yes
Change inner air filter	yes
Change oil filter	yes
Change outer air filter	yes



**Australian Hammer Supplies Hire**  
Unit 3/32 Williamson Road  
Ingleburn  
NSW 2565

Check hand controls operational	Yes
Check slew (full travel and smooth operation)	Yes
Check the hydraulic motor and the control block for oil leaks.	Yes
Does the Hitch need Shimming?	no
Foot pedals (operate correctly)	Yes
Gauges (operate correctly)	Yes
General check/adjust driver belts	Yes
General inspections/safety checks	yes
Grease & Lubricate Pins & bushes	Yes
Grease all nipples	yes
Hand controls (operate correctly)	Yes
Handbrake (functional)	yes
Inspect track tension	tes
Inspect/top up coolant (litres used)	5
Meter Reading	4072
Operational inspection controls and safety locks Air conditioner/heater	Yes
Operational inspection controls and safety locks Attachment controls	Yes
Operational inspection controls and safety locks Battery charger rate	Yes
Operational inspection controls and safety locks Engine shut off	Yes
Operational inspection controls and safety locks Engine speed high	Yes
Operational inspection controls and safety locks Engine speed low idle	Yes
Operational inspection controls and safety locks E-STOPS	Yes
Operational inspection controls and safety locks Flow test hyd system( Ref. WSM)	Yes
Operational inspection controls and safety locks Horn hazard & warning devices	Yes
Operational inspection controls and safety locks Hour & tachometer	Yes
Operational inspection controls and safety locks Hydraulic auxiliary operation	Yes
Operational inspection controls and safety locks Instruments & Gauges	Yes



**Australian Hammer Supplies Hire**  
Unit 3/32 Williamson Road  
Ingleburn  
NSW 2565

Operational inspection controls and safety locks Lights - Interior	Yes
Operational inspection controls and safety locks- Lights head,signal, stop & work	Yes
Operational inspection controls and safety locks Lights-warning	Yes
Operational inspection controls and safety locks Main relief pressure check: PSI =	Yes
Operational inspection controls and safety locks No coolant leaks	Yes
Operational inspection controls and safety locks No exhaust leaks	Yes
Operational inspection controls and safety locks No fuel system leaks	Yes
Operational inspection controls and safety locks No oil leaks	Yes
Operational inspection controls and safety locks Quick hitch	Yes
Operational inspection controls and safety locks Safety interlock function	Yes
Operational inspection controls and safety locks Seat belt operation & mounting	Yes
Operational inspection controls and safety locks Set clock & audio system	Yes
Operational inspection controls and safety locks Set service intervals	Yes
Operational inspection controls and safety locks- Switches & controls	Yes
Operational inspection controls and safety locks Verify relief valve setting (attach)	Yes
Operational inspection controls and safety locks Windscreen wipers & washers	Yes
Pre cleaner, cabin filter and outer air filter take out and blow out - Actioned?	Yes
Take hydraulic oil sample	yes
Tracks check/adjust track tension	Yes

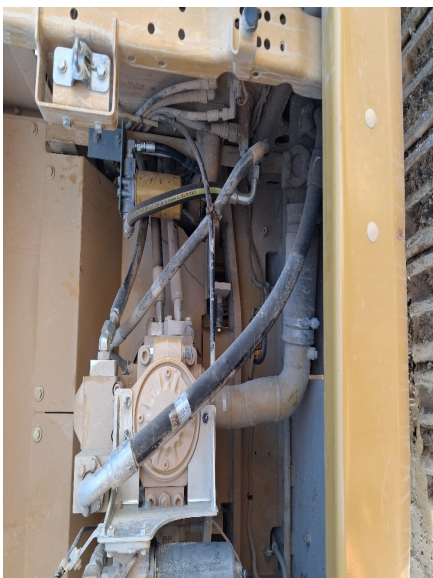
**Tyre Condition 1**



**Tyre Condition 2**



**Tyre Condition 4**



**Tyre Condition 3**

